

PART OF THE NW. 1/4, OF SECTION 28, T.7N., R.1E., S.L.B. & M.

346

STORY FARM SUBDIVISION

IN WEBER COUNTY

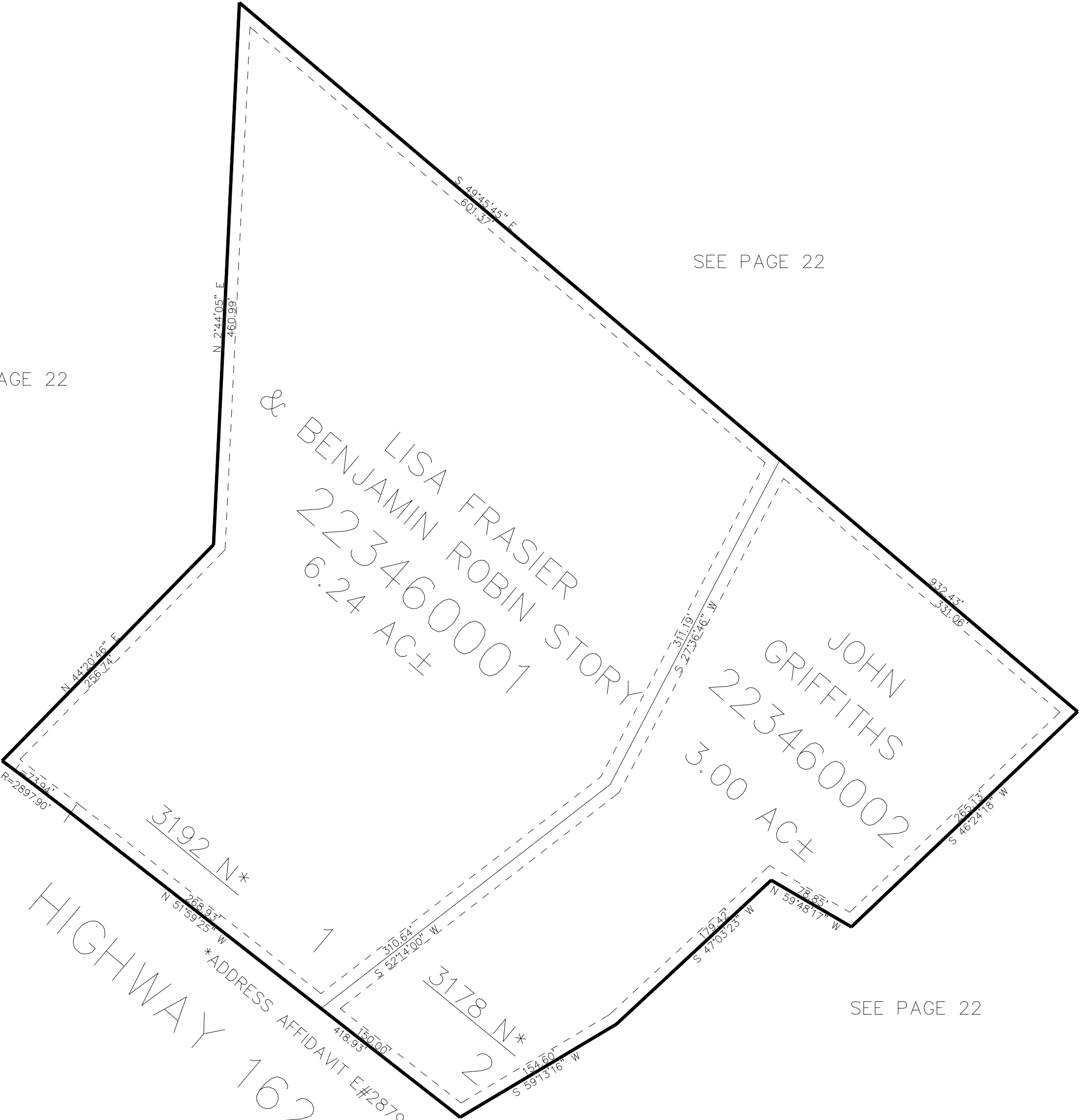
TAXING UNIT: 36

SCALE 1" = 80'

SEE PAGE 22

SEE PAGE 22

SEE PAGE 22



10' UTILITY & DRAINAGE EASEMENTS EACH SIDE OF PROPERTY LINES AS INDICATED BY DASHED LINES EXCEPT AS OTHERWISE SHOWN.

FOR COMPLETE ENG DATA SEE ORIGINAL DEDICATION PLAT IN BOOK 81, PAGE 95 OF RECORDS.